

GENESIS
FORGING THE FUTURE



FUEL ANTI-THEFT DEVICE

KOCKÒN^{CL2}

THE ONLY OPTION WHEN FUEL IS PRECIOUS: 24/7 PROTECTION

In 2008 we launched KOCKÒN internationally.

What is possibly still today the most effective family of devices in the Anti-siphon device category of products, KOCKÒN has established a new standard in preventing the theft of diesel from industrial and commercial vehicles. KOCKÒN hides an invisible heart, a mathematically defined parameter which is the basis of the tested effectiveness of each device in this now extended product family.

From science we learn that each efficiency we generate often comes at the cost of some other factor, and in the case of KOCKÒN: OUR QUEST has been that of maintaining a firm grasp on the 3 founding factors behind effective fuel protection:

SECURITY

SIMPLICITY AND RELIABILITY

FLOW RATE

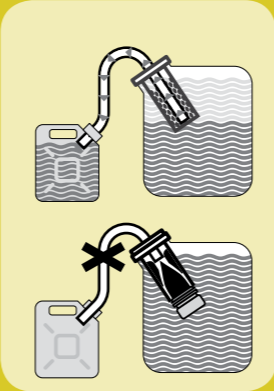
OUR SELF IMPOSED RULE has been that of achieving the highest possible score in each of these factors without penalizing the others.

KOCKÒN CL2 IS THE SYNTHESIS OF THE RULES THAT HAVE GONE INTO THIS QUEST.

KOCKÒN CL2 FEATURES ROBUST SIMPLE ASSEMBLIES WHICH MAKE FUEL SIPHONING FROM THE TANK OPENING IMPOSSIBLE.



A PREVIEW OF THE ROBUST
CORE OF OUR TIME
TESTED KOCKÒN
TECHNOLOGY.

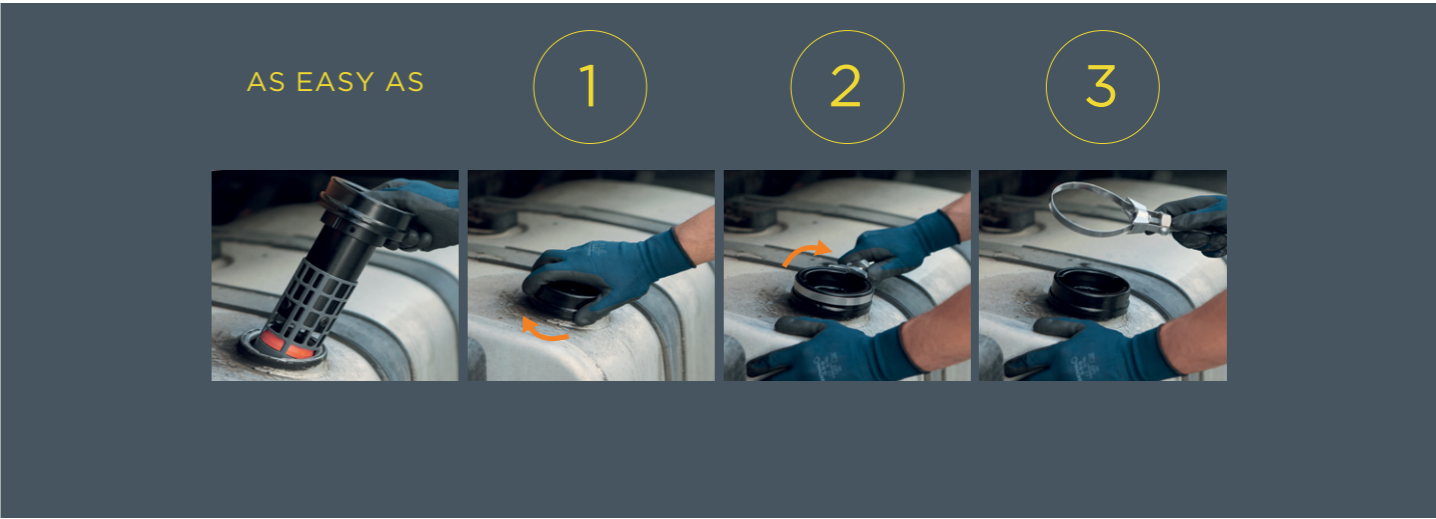


We have reduced components to a minimum and virtually eliminated fasteners.

We have stabilized flow rate like never before

We have reduced the functional heart of each product into as few as two simple parts which together resolve the math behind our technology in a robust, replicable and most reliable way.

We call this design approach DUALITY:
precision molded alloy parts which together are more than the sum of the single components of the assembly.



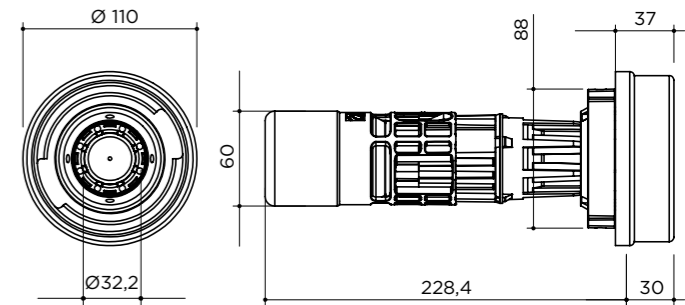
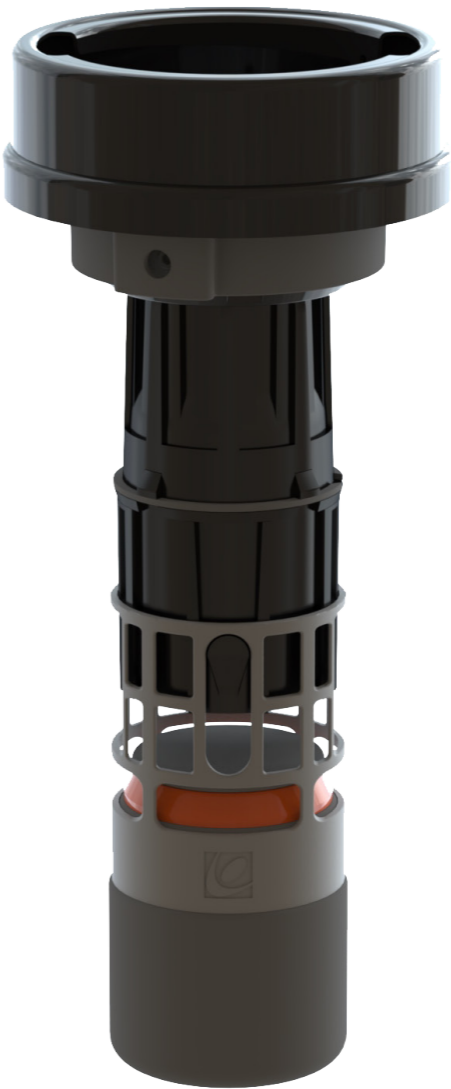


KOCKÒN CL2 APEX 105

APEX REPRESENTS THE TOP OF THE FOOD CHAIN IN WHAT CONCERNS ANTI SIPHON DEVICES.

It is the exemplary representation of our DUALITY technology combined with all of the proven features of previous generations KOCKÒN products.

- It comes with a built in float device which impedes siphoning down to the very upper reach of the tank, which is always the hardest to protect.
- Tank mounting in accordance with our patented technology: fast, reliable and without the need for modifications, sealants or glues.
- Accepts 80% of existing original OEM caps of tanks with 2-point bayonet opening Ø105 mm.



KOCKÒN CL2 APEX 105

58 04 11 001

RECOMMENDED APPLICATIONS
Fuel antitheft device for tanks necks having 2-point internal bayonet fitting 105mm.
DAF: all models - **MAN:** all models - **VOLVO:** all models - **MERCEDES:** all models
- **RENAULT:** Premium, Magnum, Midlum with metal tank neck - **IVECO:** Stralis, EuroStar, EuroTec, Trakker, EuroTrakker - **DOOSAN:** all models with metal tank neck - **LIEBHERR:** all models with metal tank neck

TECHNICAL SPECIFICATIONS			
 120 l/min	 Steel/Zinc Magnesium alloy	 110x110x258mm MAX	 228mm
 Ø 32mm	 1100g	 60 mm	 110mm

UNPARALLELED PROTECTION

No space for siphoning: only lets fuel into the tank, making it impossible to get fuel out by other means.

PROGRESSIVE FLOAT LOCK

The progressive float lock prevents any access to the fuel located in the upper part of the tank without interfering with refueling operations.

DUALITY TECH

Duality describes an assembly made of two parts made from Magnesium Alloy casting. The resulting assembly is ultimately effective in terms of strength, effectiveness and compliance to its precise scope as a finished anti siphon device. We introduced this technology in 2020 and it is based on our proven patented KOCKÒN technology.

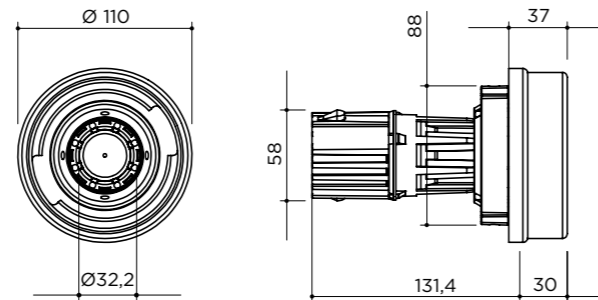
KOCKÒN CL2 KALIBER 105

FUEL ANTI-THEFT DEVICE

KALIBER IS THE BEST SOLUTION WHEN THERE IS A LONG TANK NECK AND NO NEED OR SPACE FOR A FLOAT LOCK.

Full DUALITY technology, only without the float device.

- Tank mounting in accordance with our patented technology: fast, reliable and without the need for modifications, sealants or glues.
- Accepts 80% of existing original OEM caps of the standard 105mm diameter 2 point bayonet type. For tanks with 2-point bayonet opening ø105 mm.



KOCKÒN CL2 KALIBER 105

58 04 21 001

RECOMMENDED APPLICATIONS

Fuel antitheft device for tanks necks having 2-point internal bayonet fitting 105mm.
DAF: all models - **MAN:** all models - **VOLVO:** all models - **MERCEDES:** all models
RENAULT: Premium, Magnum, Midlum with metal tank neck - **IVECO:** Stralis, EuroStar, EuroTec, Trakker, EuroTrakker - **DOOSAN:** all models with metal tank neck - **LIEBHERR:** all models with metal tank neck

TECHNICAL SPECIFICATIONS

120 l/min	Steel/Zinc Magnesium alloy	110x110x161mm	131mm
Ø 32mm	1000g	58 mm	110mm

UNPARALLELED PROTECTION

No space for siphoning: only lets fuel into the tank, making it impossible to get fuel out by other means.

USES ORIGINAL CAP

The majority of original vehicle caps are compatible with the appropriate device from the KOCKÒN range. Few exceptions do exist, in which case compatible replacement caps are available in the Genesis spare parts range.

DUALITY TECH

Duality describes an assembly made of two parts made from Magnesium Alloy casting. The resulting assembly is ultimately effective in terms of strength, effectiveness and compliance to its precise scope as a finished anti siphon device. We introduced this technology in 2020 and it is based on our proven patented KOCKÒN technology.

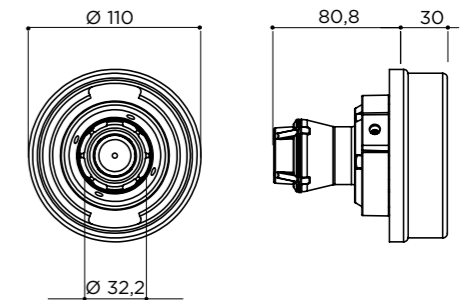
KOCKÒN CL2 XL 105

FUEL ANTI-THEFT DEVICE

XL STANDS FOR EXTRA LOW.

This solution is suited for tank necks which are sheltered by very low decks or within limited, confined spaces. It is a versatile solution featuring a swinging body which allows refueling pistol insertion at angles which may avoid collision between the pistol and surrounding structures.

- Low deck compatibility
- Tank mounting in accordance with our patented technology: fast, reliable and without the need for modifications, sealants or glues.
- Accepts 80% of existing original OEM caps of the standard 105mm diameter 2 point bayonet type. For tanks with 2-point bayonet opening ø105 mm.



KOCKÒN CL2 XL 105

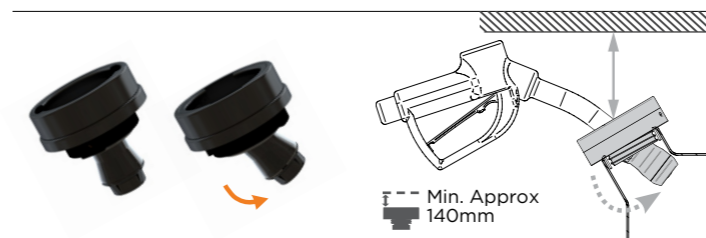
58 04 31 001

RECOMMENDED APPLICATIONS

Fuel antitheft device for tanks necks having 2-point internal bayonet fitting 105mm.
DAF: all models - **MAN:** all models - **VOLVO:** all models - **MERCEDES:** all models
RENAULT: Premium, Magnum, Midlum with metal tank neck - **IVECO:** Stralis, EuroStar, EuroTec, Trakker, EuroTrakker - **DOOSAN:** all models with metal tank neck - **LIEBHERR:** all models with metal tank neck

TECHNICAL SPECIFICATIONS

120 l/min	Alu /Steel	110x110x110,8mm	73,8mm
Ø 32mm	780g	47mm	110mm



TRULY UNIVERSAL SOLUTION

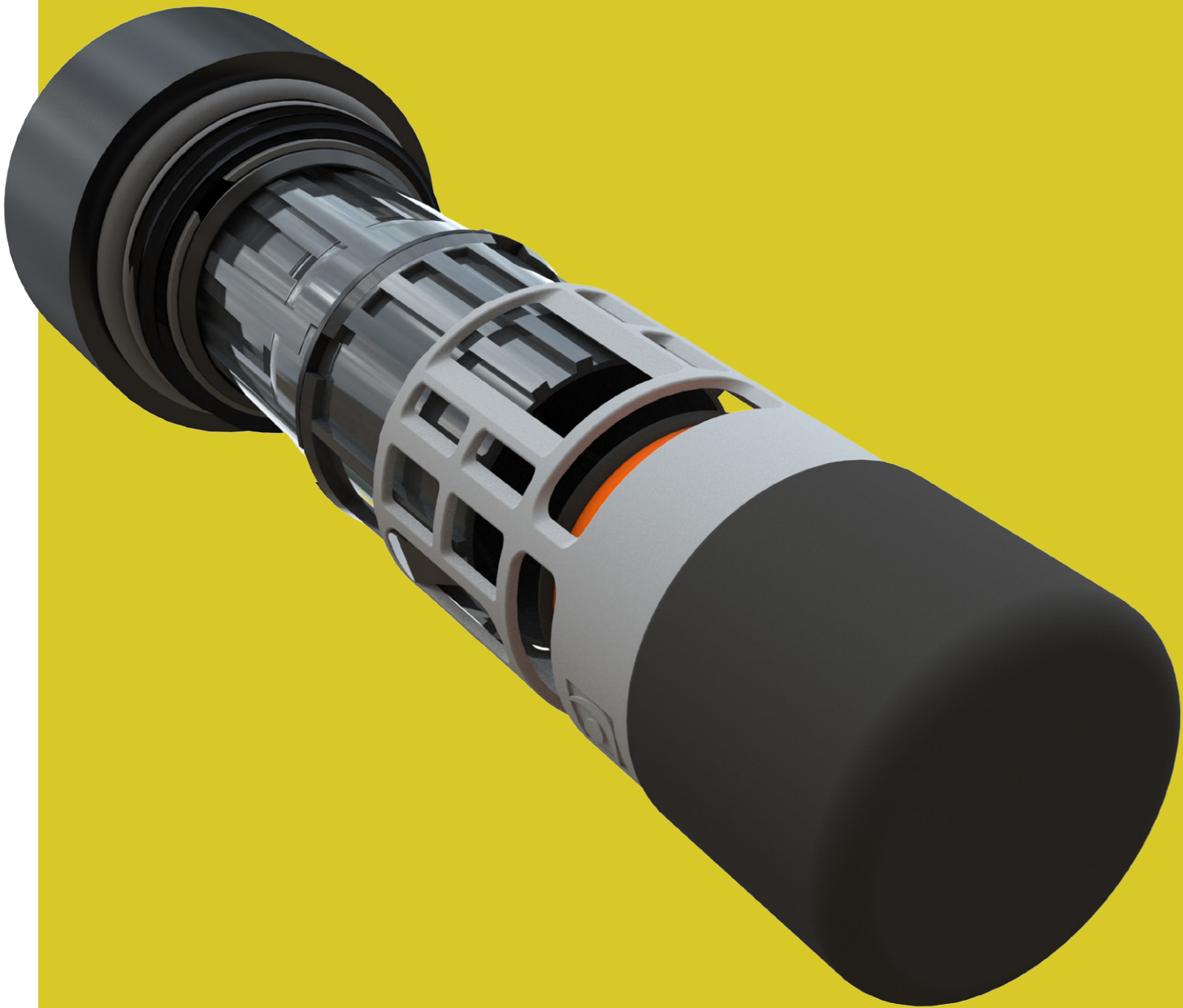
Specially suited to all those situations where there are external conditions that impact on possible fuel pistol positioning.

ULTRA LOW PROFILE

Specially designed mechanical configuration to suit situations where the height above the tank may be limited.

DUALITY TECH

Duality describes an assembly made of two parts made from Magnesium Alloy casting. The resulting assembly is ultimately effective in terms of strength, effectiveness and compliance to its precise scope as a finished anti siphon device. We introduced this technology in 2020 and it is based on our proven patented KOCKÒN technology.

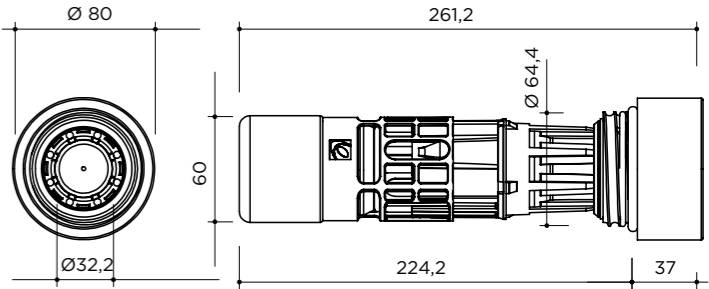


KOCKÒN CL2 APEX 80

APEX REPRESENTS THE TOP OF THE FOOD CHAIN IN WHAT CONCERNS ANTI SIPHON DEVICES.

It is the exemplary representation of our DUALITY technology combined with all of the proven features of previous generations KOCKÒN products.

- It comes with a built in float device which impedes siphoning down to the very upper reach of the tank, which is always the hardest to protect.
- Tank mounting in accordance with our patented technology: fast, reliable and without the need for modifications, sealants or glues.
- Accepts original OEM caps tanks with 80mm internally threaded tank necks.



KOCKÒN CL2 APEX 80

58 17 16 001

RECOMMENDED APPLICATIONS
For tank necks with inner threaded tank opening Ø 80 mm.
SCANIA: all models - **JOHN DEERE**: 5000-6000 - **MASSEY FERGUSON**: 4292 hd
- **IVECO**: Eurocargo having metal tank neck

TECHNICAL SPECIFICATIONS

 120 l/min	 Steel/Zinc Magnesium alloy	 80x80x261mm MAX	 224mm
 Ø 32mm	 900g	 60 mm	 80mm

UNPARALLELED PROTECTION

No space for siphoning: only lets fuel into the tank, making it impossible to get fuel out by other means.

PROGRESSIVE FLOAT LOCK

The progressive float lock prevents any access to the fuel located in the upper part of the tank without interfering with refueling operations.

DUALITY TECH

Duality describes an assembly made of two parts made from Magnesium Alloy casting. The resulting assembly is ultimately effective in terms of strength, effectiveness and compliance to its precise scope as a finished anti siphon device. We introduced this technology in 2020 and it is based on our proven patented KOCKÒN technology.

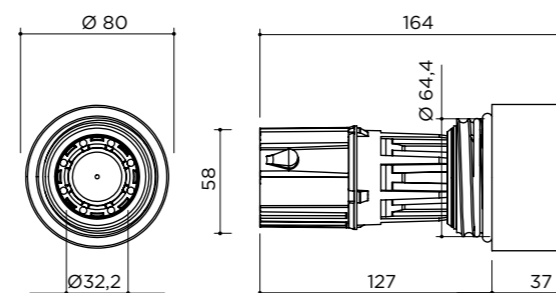
KOCKÒN CL2 KALIBER 80

FUEL ANTI-THEFT DEVICE

KALIBER IS THE BEST SOLUTION WHEN THERE IS A LONG TANK NECK AND NO NEED OR SPACE FOR A FLOAT LOCK.

Full DUALITY technology, only without the float device.

- Tank mounting in accordance with our patented technology: fast, reliable and without the need for modifications, sealants or glues.
- Accepts original OEM caps of the standard 80mm diameter threaded type. For tanks with 80mm internally threaded tank necks.



KOCKÒN CL2 KALIBER 80

58 17 26 001

RECOMMENDED APPLICATIONS

For tank necks with inner threaded tank opening Ø 80 mm.

SCANIA: all models - **JOHN DEERE:** 5000-6000 - **MASSEY FERGUSON:** 4292 hd
- **IVECO:** Eurocargo having metal tank neck

TECHNICAL SPECIFICATIONS

120 l/min	Steel/Zinc Magnesium alloy	116x116x258mm	127mm
Ø 32mm	900g	58mm	80mm

UNPARALLELED PROTECTION

No space for siphoning: only lets fuel into the tank, making it impossible to get fuel out by other means.

USES ORIGINAL CAP

The majority of original vehicle caps are compatible with the appropriate device from the KOCKÒN range. Few exceptions do exist, in which case compatible replacement caps are available in the Genesis spare parts range.

DUALITY TECH

Duality describes an assembly made of two parts made from Magnesium Alloy casting. The resulting assembly is ultimately effective in terms of strength, effectiveness and compliance to its precise scope as a finished anti siphon device. We introduced this technology in 2020 and it is based on our proven patented KOCKÒN technology.

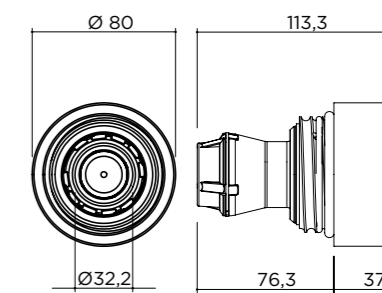
KOCKÒN CL2 XL 80

FUEL ANTI-THEFT DEVICE

XL STANDS FOR EXTRA LOW.

This solution is suited for tank necks which are sheltered by very low decks or within limited, confined spaces. It is a versatile solution featuring a swinging body which allows refueling pistol insertion at angles which may avoid collision between the pistol and surrounding structures.

- Low deck compatibility
- Tank mounting in accordance with our patented technology: fast, reliable and without the need for modifications, sealants or glues.
- Accepts original OEM caps of the standard 80mm diameter threaded type. For tanks with 80mm internally threaded tank necks.



KOCKÒN CL2 XL 80

58 17 36 001

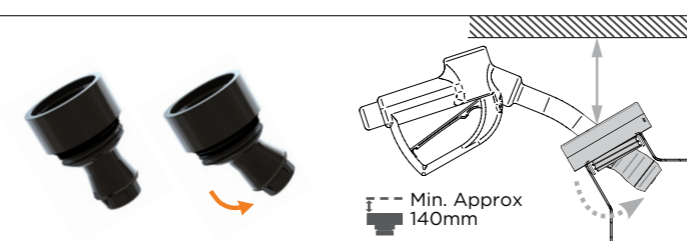
RECOMMENDED APPLICATIONS

For tanks with inner threaded opening Ø80 mm

SCANIA: all models - **JOHN DEERE:** 5000-6000 - **MASSEY FERGUSON:** 4292 hd
- **IVECO:** Eurocargo having metal tank neck

TECHNICAL SPECIFICATIONS

120 l/min	Alu /Steel	80x80x111,6mm	71,2mm
Ø 32mm	570g	47mm	80mm



TRULY UNIVERSAL SOLUTION

Specially suited to all those situations where there are external conditions that impact on possible fuel pistol positioning.

ULTRA LOW PROFILE

Specially designed mechanical configuration to suit situations where the height above the tank may be limited.

DUALITY TECH

Duality describes an assembly made of two parts made from Magnesium Alloy casting. The resulting assembly is ultimately effective in terms of strength, effectiveness and compliance to its precise scope as a finished anti siphon device. We introduced this technology in 2020 and it is based on our proven patented KOCKÒN technology.

LagoGENESIS reserves the right to make any change or improvement to their products and to this document at any time and without any prior notification.

GENESIS is a brand of LagoGENESIS s.r.l.

LagoGENESIS s.r.l. - via Selenia 1 - 36061 Bassano del Grappa (VI) Italy
ph & fax + 39 0424 527851

www.lagogenesis.it